



A Working Partnership

Community Engagement Groups, Local Interagency Coordinating Councils, and
State Interagency Coordinating Council

How it works



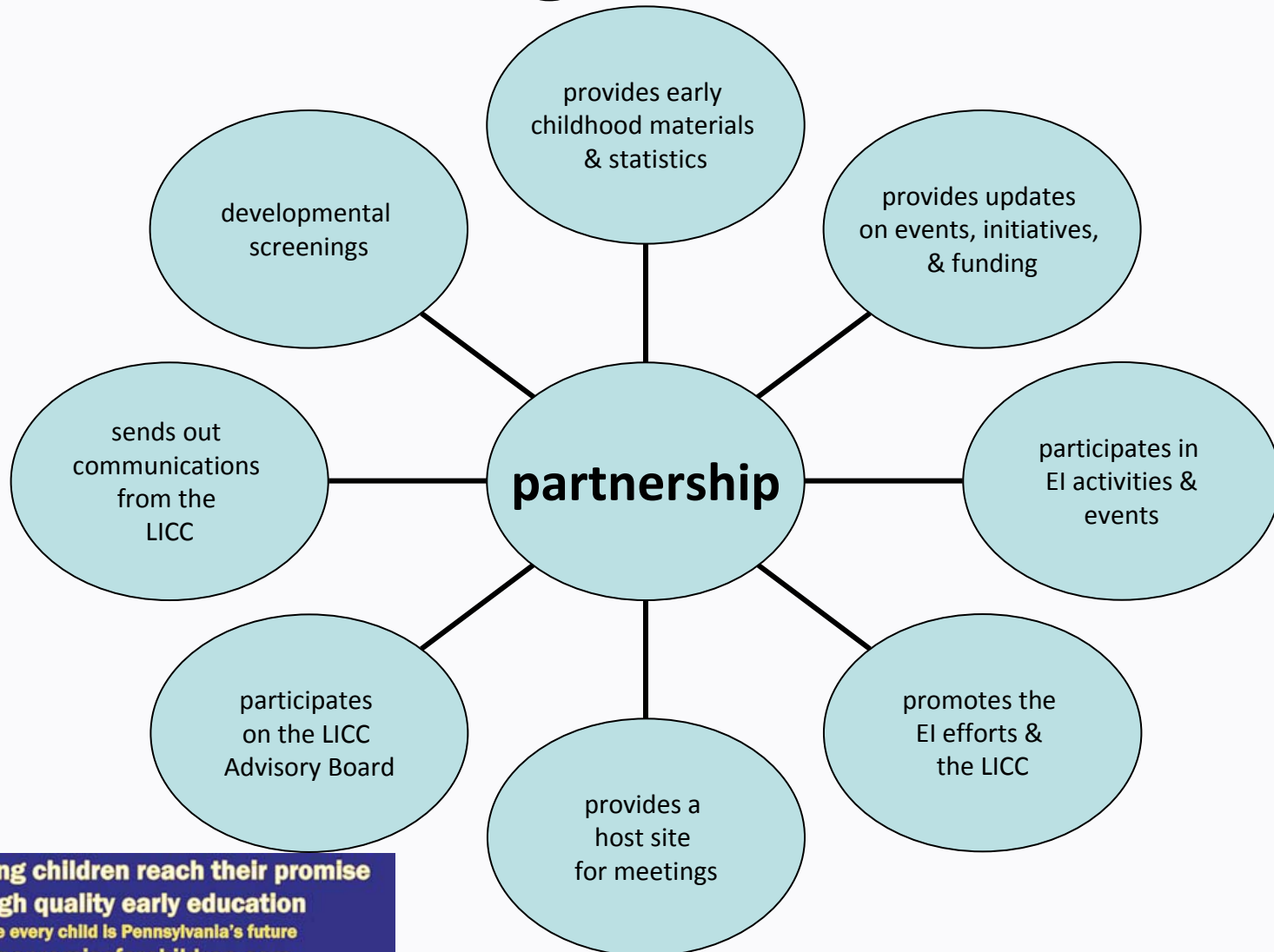


The working partnership: LICCs



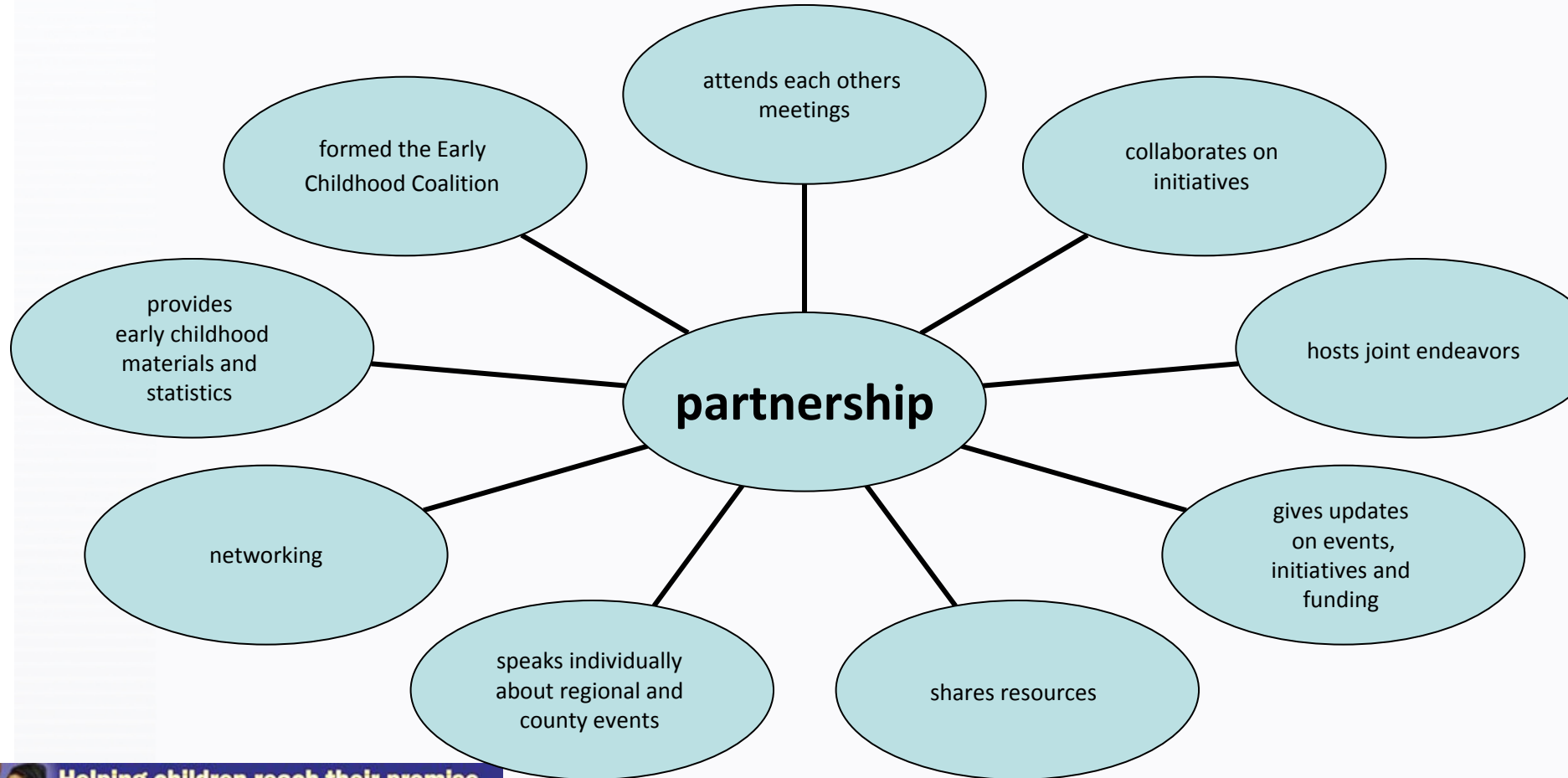


The working partnership: CEGs





The working partnership: Together



Taking it one step further...

The Community Engagement
Groups were asked

how can this partnership be strengthened?





Continue doing what
we're doing!





Of value to the CEGs

- Providing parent support & participation input.
- Bringing a diverse perspective for transition activities.
- Existence of pre-existing relationships & lessons learned.
- More presence and collaboration with the IU and birth to 3 early intervention and their providers of services.
- Assisting in reaching families who have children transitioning into Kindergarten.
- Providing assistance with the distribution of the information at every level .
- Participating in community & family outreach activities.
- Provide credibility with school districts.





What are the challenges?

A large portion of the Community Engagement Groups reported their main challenge as ...

Minimal challenges!





Challenges

- Meeting times and space to accommodate a full scale joint meeting.
- Getting more parents involved.
- Multitude of meeting .
- Differences between the goals and initiative of the two groups.
- Sharing information with the “right” people.
- Enough time!





What is next?

What are ways in which your Community Engagement Group can support the work you do?

What is the best way to communicate this to your Community Engagement Group?



Mary Hall
Communication & Outreach Specialist
PA Key

717-213-2077

marhal@berksiu.org

